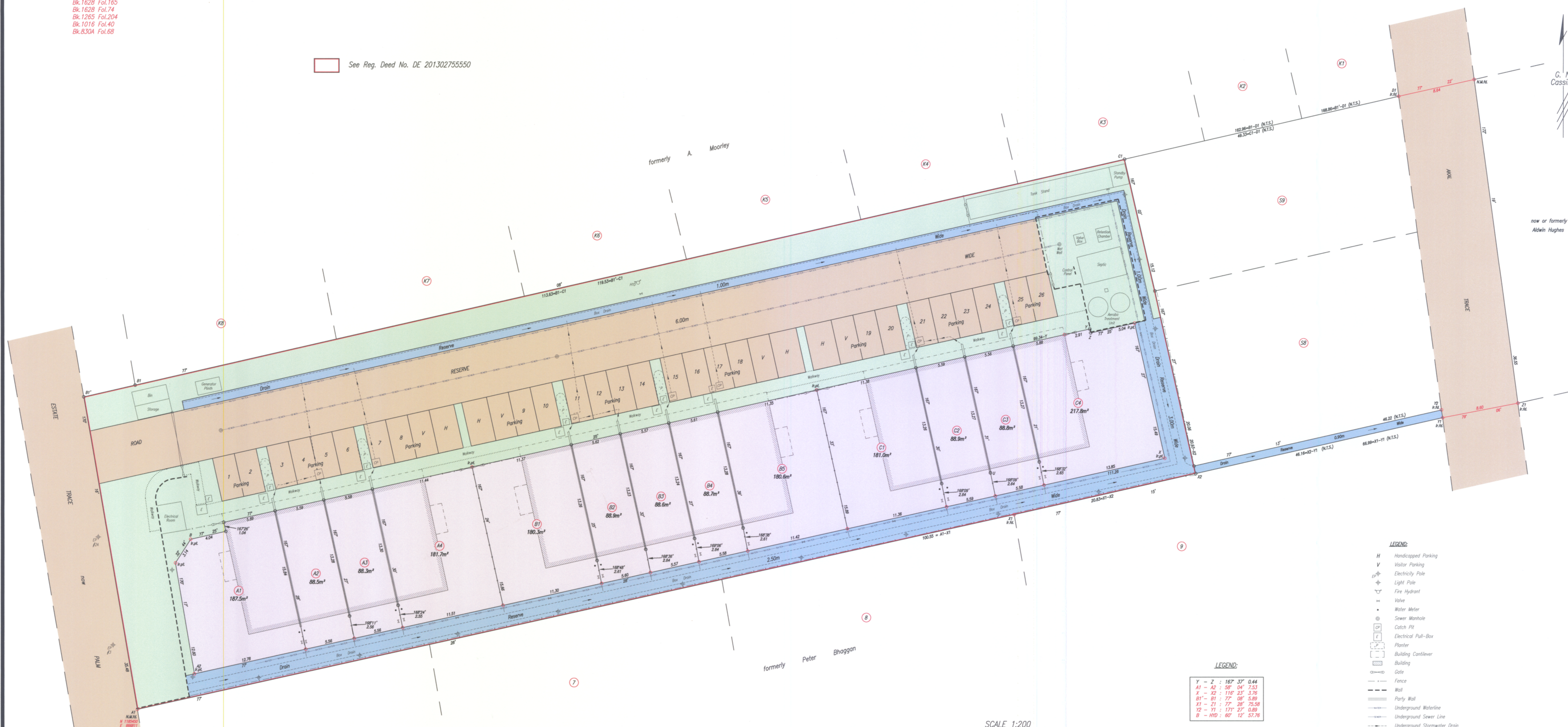


"THE PALMS", PALM DRIVE, UPPER SANTA CRUZ

Vide : Bk.1601 Fol.148
Bk.1628 Fol.165
Bk.1628 Fol.74
Bk.1265 Fol.204
Bk.1016 Fol.40
Bk.8304 Fol.68

See Reg. Deed No. DE 201302755550



- LEGEND:**
- H Handicapped Parking
 - V Visitor Parking
 - Electricity Pole
 - Light Pole
 - Fire Hydrant
 - Valve
 - Water Meter
 - Sewer Manhole
 - Catch Pit
 - Electrical Pull-Box
 - Planter
 - Building Contour
 - Building
 - Gate
 - Fence
 - Well
 - Party Wall
 - Underground Waterline
 - Underground Sewer Line
 - Underground Stormwater Drain
 - Walkway
 - Existing Box Drain
 - Common Area

LEGEND:

Y - Z	: 167° 37' 0.44
A1 - A2	: 50° 04' 7.53
X - X2	: 116° 23' 3.76
B1 - B1	: 77° 08' 5.89
Y1 - Z1	: 77° 08' 75.58
Y2 - Y1	: 171° 27' 0.89
B - HD	: 60° 12' 57.76

SCALE 1:200
Distances are in metres

○ Denotes No Mark Put
○ Denotes Nail Put except where otherwise stated
Bearings are Cassini Grid based on Solar Observations
Co-ordinates are Napanima 1955 Datum/UTM Zone 20N, derived using Handheld GPS (+/-5m)
Plan of 13 Parcels coloured pink in the Ward of St. Anns
Containing together one thousand seven hundred and forty nine point six square metres
Surveyed by me, with due authority, in December 2020 at the request of International Project Initiatives Ltd.
Certified correct in accordance with Regulation 25 (1) of the Land Surveyors Regulations 1998

Checked by A. D. Melcher
Entered on Trinidad & Tobago Land Surveyor 5th February 2021.
FILE PATH = AD4010-D:\PI\THE PALMS\AS-BUILT\PRELIMINARY_CAD_REV2.DWG

